

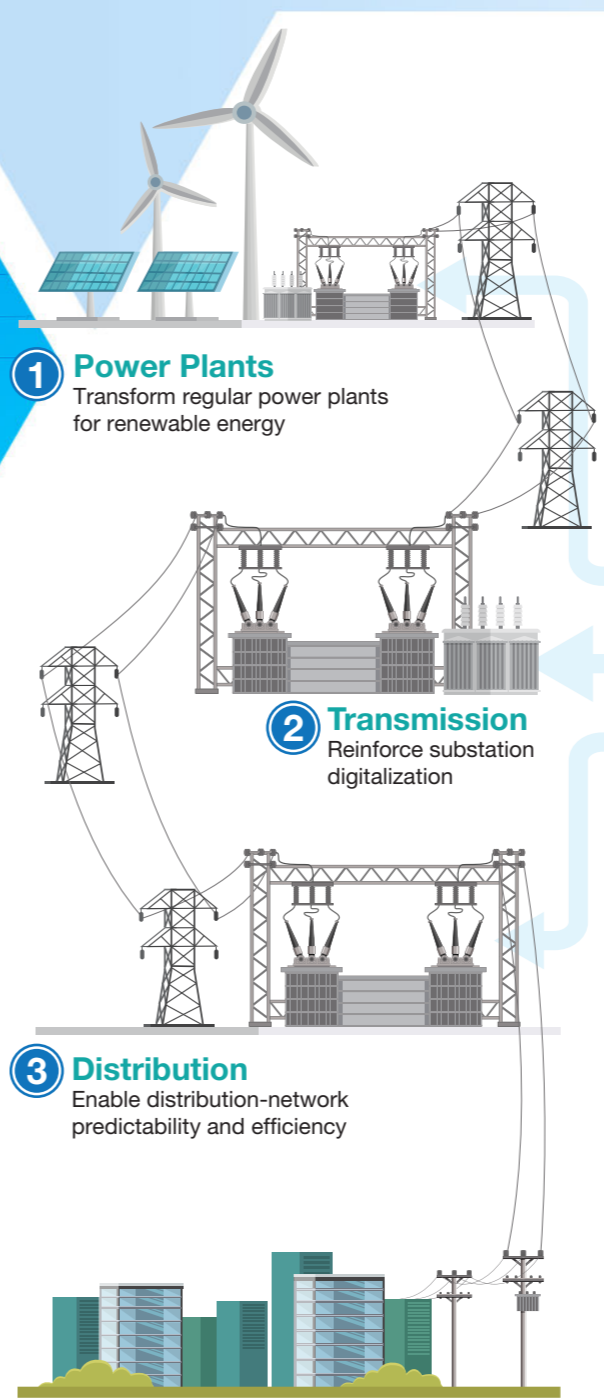
## Embrace Digital Transformation in Your Substation for a Sustainable Future



*Built-in Network Management*  
*Visualized IEC 61850*  
*Virtualized Management*



IoT Solutions Alliance

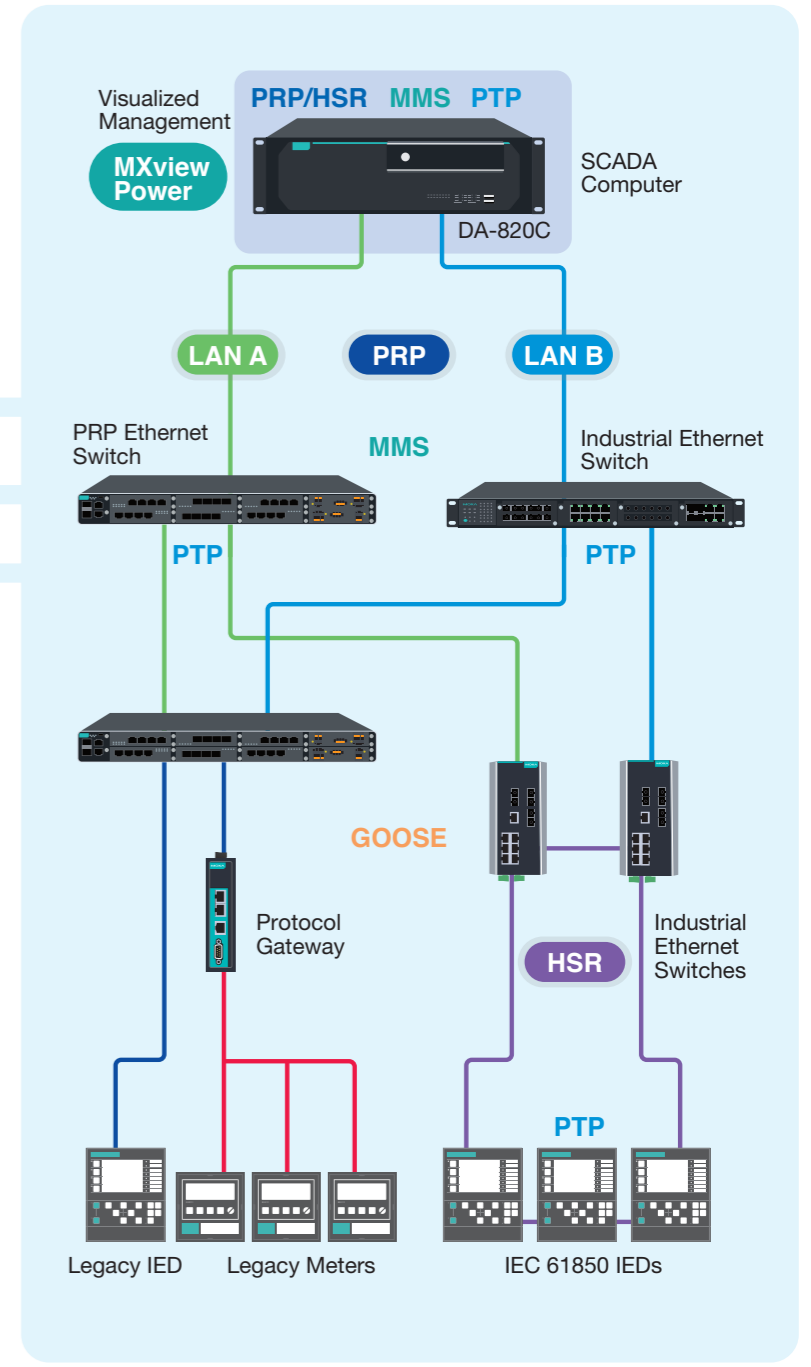
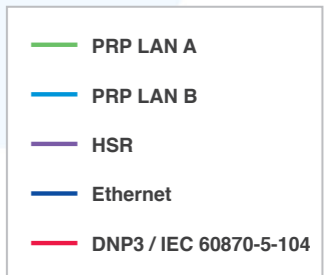


**1 Power Plants**  
Transform regular power plants for renewable energy

**2 Transmission**  
Reinforce substation digitalization

**3 Distribution**  
Enable distribution-network predictability and efficiency

**4 Prosumer**  
Enable demand-side predictability and efficiency



## IEC 61850 Substation Automation

Renewable energy is fast taking over the future of the energy sector. Renewable energy can not only reduce our dependency on fossil fuels but also provide energy security. Substation operators need to prepare their substations and distribution infrastructure to integrate energy from renewable sources by digitalizing their substations for efficient and secure aggregation and distribution of power from different sources. With a digital substation, operators can use real-time data to make smarter and safer decisions faster.

To help our customers embrace digital transformation in their substations, Moxa, based on its successful experience of helping 7,500 substations go digital around the world, has developed and integrated a PRP/HSR, PTP, and MMS solution with visualized management in our computing platforms.

# Digitalize Your Substation With Our

## Tailor-made High-performance Highly Available Robust Computing Platforms

Both greenfield and retrofit substation projects require high-speed high-volume communication that can withstand high EMI/EMC interference. The DA series computers are IEC 61850-3 substation computers that feature a powerful Intel® processor and multiple expansion interfaces to enable robust connectivity to smart grids.



Let us help you embrace digital transformation in your substation for a brighter future



### Industry-proven Reliable Design

- Substation: IEC 61850-3, IEEE 1613
- Protection Relay: IEC 60255
- Wayside Traction Power: EN 50121-4



### Fanless With Wide Operating Temperature Range

- Designed for efficient heat dissipation without a fan
- -40 to 70°C operating temperature range



### Ready-to-use MMS Server and ICD File

MMS service package for Windows-based DA series computing platforms



### Virtualization Support

Powerful Intel® Xeon® or Core™ i7 processor and up to 64 GB RAM enable the reduction of hardware in the substation and adoption of virtualization technology



### Time Synchronization for Precision

- PTP (IEEE 1588)
- IRIG-B



### Ethernet Redundancy

PRP/HSR redundancy and zero-time recovery solution



### Enhanced Hardware Security

- UEFI Secure Boot
- Built-in TPM 2.0
- USB port protection
- Power button protected against accidental activation



### Visualized PRP/HSR Management

Visualized PRP/HSR networking status via MXview Power network management solution



### Versatile and Resilient Expansion Capabilities

Expansion modules for PRP/HSR, IRIG-B, Fiber SFP, Gigabit Ethernet, and Serial connectivity



### Predictive Maintenance Tool

Moxa Proactive Monitoring, a built-in tool, helps operators monitor the computer KPIs and trigger alerts based on preset thresholds





### Tailor-made for Power Applications

Our portfolio consists of products with long and iterative life cycles for system longevity in the power industry.

2008	2010	2012	2014	2016	2018	2020	2022	Future
DA-682 July 2008		DA-682A Nov. 2013				DA-682C-KL		DA-682C (iterative releases)
	DA-681 Feb. 2009		DA-681A Dec. 2015			DA-681C-KL		DA-681C (iterative releases)
			DA-820 Nov. 2014			DA-820C-KL		DA-820C (iterative releases)
	DA-710 Jan. 2010				DA-720 Feb. 2017			DA-720 (iterative releases)

# Choose a Substation Automation Computer

Tailor-made for power applications, the DA series computers have passed rigorous EMI/EMC tests and strictly adhere to IEC 61850-3, IEEE 1613, IEC 60255, and EN 50121-4 industrial standards to ensure long-lasting reliable operations in substation SCADA, protection and control applications, EMS/PCS in energy storage systems, and rail wayside traction power systems.

				
	<a href="#">Datasheet</a>	<a href="#">Datasheet</a>	<a href="#">Datasheet</a>	<a href="#">Datasheet</a>
Series	DA-681C	DA-682C	DA-720	DA-820C
CPU	<ul style="list-style-type: none"> <li>Intel® Core™ i3-7100U</li> <li>Intel® Celeron® 3965U</li> </ul>	<ul style="list-style-type: none"> <li>Intel® Core™ i7-7600U</li> <li>Intel® Core™ i5-7300U</li> <li>Intel® Core™ i3-7100U</li> <li>Intel® Celeron® 3965U</li> </ul>	<ul style="list-style-type: none"> <li>Intel® Core™ i7-6600U</li> <li>Intel® Core™ i5-6300U</li> </ul>	<ul style="list-style-type: none"> <li>Intel® Xeon® E3-1505M v6</li> <li>Intel® Xeon® E3-1505L v6</li> <li>Intel® Core™ i7-7820EQ</li> <li>Intel® Core™ i5-7442EQ</li> <li>Intel® Core™ i3-7102E</li> </ul>
System Memory Slot	SODIMM DDR4 slots x 2 (max. 32 GB)	SODIMM DDR4 slots x 2 (max. 32 GB)	SODIMM DDR4 slots x 2 (max. 32 GB)	SODIMM DDR4 slots x 2 (max. 64 GB)
Supported OS	<ul style="list-style-type: none"> <li>Windows 10 IoT Ent 2021 LTSC, version 21H2</li> <li>Linux Debian 11</li> </ul>	<ul style="list-style-type: none"> <li>Windows 10 IoT Ent 2021 LTSC, version 21H2</li> <li>Linux Debian 11</li> </ul>	<ul style="list-style-type: none"> <li>Windows 10 IoT Ent 2021 LTSC, version 21H2</li> <li>Linux Debian 11</li> </ul>	<ul style="list-style-type: none"> <li>Windows 10 IoT Ent 2021 LTSC, version 21H2</li> <li>Linux Debian 11</li> </ul>
MMS Server & ICD file	-	-	-	✓
Storage Slot	2.5-inch HDD/SSD slots x 1 mSATA x 1	2.5-inch HDD/SSD slots x 2 mSATA x 1	mSATA slot x 1	2.5-inch HDD/SSD slots x 4 mSATA x 1
PTP (IEEE 1588)	✓	✓	-	✓
Ethernet Ports	GbE (RJ45) x 6	GbE (RJ45) x 6	GbE (RJ45) x 14	GbE (RJ45) x 4
Serial Ports	RS-232/422/485 ports x 2, software selectable (DB9 male) and RS-485 ports x 10 (terminal block)	RS-232/422/485 ports x 2, software selectable (terminal block)	RS-232/422/485 ports x 2, software selectable (terminal block)	RS-232/422/485 ports x 2, software selectable (DB9 male)
USB 2.0	USB 2.0 x 3	USB 2.0 x 3	USB 2.0 x 2	USB 2.0 x 3
USB 3.0	USB 3.0 x 3	USB 3.0 x 3	USB 3.0 x 2	USB 3.0 x 3
Digital Input	DIs x 6	DIs x 6	DIs x 4 (via DE-2-IRIG-4-DI/DO)	DIs x 6
Digital Output	DOs x 2	DOs x 2	DOs x 4 (via DE-2-IRIG-4-DI/DO)	DOs x 2
Expansion Slots	-	Proprietary <sup>1</sup> PCIe slots x 2	Proprietary <sup>1</sup> PCIe slots x 3	PCIe x1 slots x 2, PCIe x4 slot x 1, PCIe x16 slot x 1, PCI slot x 1
TPM 2.0		Available in March 2023		✓
UEFI Secure Boot		Available in March 2023		✓
Video Output	HDMI x 2	HDMI x 2	DVI-D x 1 VGA x 1	HDMI x 2 VGA x 1
Input Voltage	100 to 240 VDC, 100 to 240 VAC	100 to 240 VDC, 100 to 240 VAC	100 to 240 VDC, 100 to 240 VAC	100 to 240 VDC, 100 to 240 VAC
Dimensions (without ears)	440 x 316 x 44 mm (17.32 x 12.44 x 1.73 in)	440 x 282 x 88 mm (17.32 x 11.08 x 3.46 in)	440 x 301 x 90 mm (17.32 x 12.20 x 3.54 in)	440 x 281.4 x 132.8 mm (17.32 x 11.08 x 5.23 in)
Installation	19-inch rack mounting	19-inch rack mounting	19-inch rack mounting	19-inch rack mounting
Operating Temperature	-40 to 70°C (-40 to 158°F)	-40 to 70°C (-40 to 158°F)	-25 to 55°C (-13 to 131°F)	<ul style="list-style-type: none"> <li>Standard Models: -25 to 55°C (-13 to 131°F)</li> <li>Wide Temp. Models: -40 to 70°C (-40 to 158°F)</li> </ul>
Industrial Standards	IEC 61850-3, IEC 60255, IEEE 1613, EN 50121-4	IEC 61850-3, IEC 60255, IEEE 1613, EN 50121-4	IEC 61850-3, IEC 60255, IEEE 1613, EN 50121-4	IEC 61850-3, IEC 60255, IEEE 1613, EN 50121-4

1. Non-standard PCIe slot

# DA-820C / DA-682C / DA-720 Versatile and Resilient Expansion Capabilities

## DA-820C



Standard PCI and PCIe Interfaces	DA-IRIG-B-S-02-T	DE-FX02-SFP-T	DA-PRP-HSR-I210
	Time-sync Module	LAN Module	PRP/HSR Module
	2-port IRIG-B time-synchronization module	2-port 100 Mbps SFP fiber module	2-port Giga LAN PRP/HSR module (RJ45 & SPF combo)

SFP module not included

## DA-682C



Moxa Proprietary Interface	DN-SP08-I-TB	DN-SP08-I-DB	DN-LN04-RJ	DN-FX04	DA-PRP-HSR-I210
	Serial Module	Serial Module	LAN Module	Fiber Module	PRP/HSR Module
	8-port RS-232/422/485 serial module (terminal block, software selectable)	8-port RS-232/422/485 serial module (DB9 connector, software selectable)	4-port 10/100/1000 Mbps LAN module (RJ45 connectors)	4-port SFP fiber card	2-port Giga LAN PRP/HSR module (RJ45 & SPF combo)

SFP module not included

## DA-720



Moxa Proprietary Interface	DE-2-SATA	DE-SP08-I-TB	DE-2-IRIG-B-4-DI/DO	DE-LN04-RJ	DE-LN08-RJ	DE-PRP-HSR-EF
	SATA Storage	Serial Module	Time-sync Module	LAN Module	LAN Module	PRP/HSR Module
	2 x SATA-III 2.5" storage kit	8-port RS-232/422/485 serial module (terminal block, software selectable)	2 IRIG-B signal input port, 4 digital inputs, 4 digital outputs	4-port 10/100/1000 Mbps LAN module (RJ45 connectors)	8-port 10/100/1000 Mbps LAN module (RJ45 connectors)	2-port Giga LAN PRP/HSR module (RJ45 & SPF combo)

SFP module not included





## Your Trusted Partner in Automation

Moxa is a leading provider of edge connectivity, industrial computing, and network infrastructure solutions for enabling connectivity for the Industrial Internet of Things (IIoT). With 35 years of industry experience, Moxa has connected more than 82 million devices worldwide and has a distribution and service network that reaches customers in more than 80 countries. Moxa delivers lasting business value by empowering industries with reliable networks and sincere service. Information about Moxa's solutions is available at [www.moxa.com](http://www.moxa.com).

### **Moxa Americas USA**

Toll Free: 1-888-MOXA-USA  
Tel: +1-714-528-6777  
Fax: +1-714-528-6778  
[usa@moxa.com](mailto:usa@moxa.com)

### **Brazil**

Tel: +55-11-95261-6545  
[brazil@moxa.com](mailto:brazil@moxa.com)

### **Moxa Europe**

Tel: +49-89-413-25-73-0  
[europa@moxa.com](mailto:europa@moxa.com)

### **Moxa Asia-Pacific and Taiwan Asia/Taiwan**

Tel: +886-2-8919-1230  
Fax: +886-2-8522-8623  
[asia@moxa.com](mailto:asia@moxa.com)  
[taiwan@moxa.com](mailto:taiwan@moxa.com)

### **India**

Tel: +91-80-4172-9088  
Fax: +91-80-4132-1045  
[india@moxa.com](mailto:india@moxa.com)

### **Russia**

Tel: +7-495-287-0929  
Fax: +7-495-269-0929  
[russia@moxa.com](mailto:russia@moxa.com)

### **Korea**

Tel: +82-2-6268-4048  
Fax: +82-2-6268-4044  
[korea@moxa.com](mailto:korea@moxa.com)

### **Japan**

Tel: +81-3-6721-5670  
Fax: +81-3-6721-5671  
[japan@moxa.com](mailto:japan@moxa.com)

### **Moxa China Shanghai**

Tel: +86-21-5258-9955  
Fax: +86-21-5258-5505  
[china@moxa.com](mailto:china@moxa.com)

### **Beijing**

Tel: +86-10-5976-6123/24/25/26  
Fax: +86-10-5976-6122  
[china@moxa.com](mailto:china@moxa.com)

### **Shenzhen**

Tel: +86-755-8368-4084/94  
Fax: +86-755-8368-4148  
[china@moxa.com](mailto:china@moxa.com)